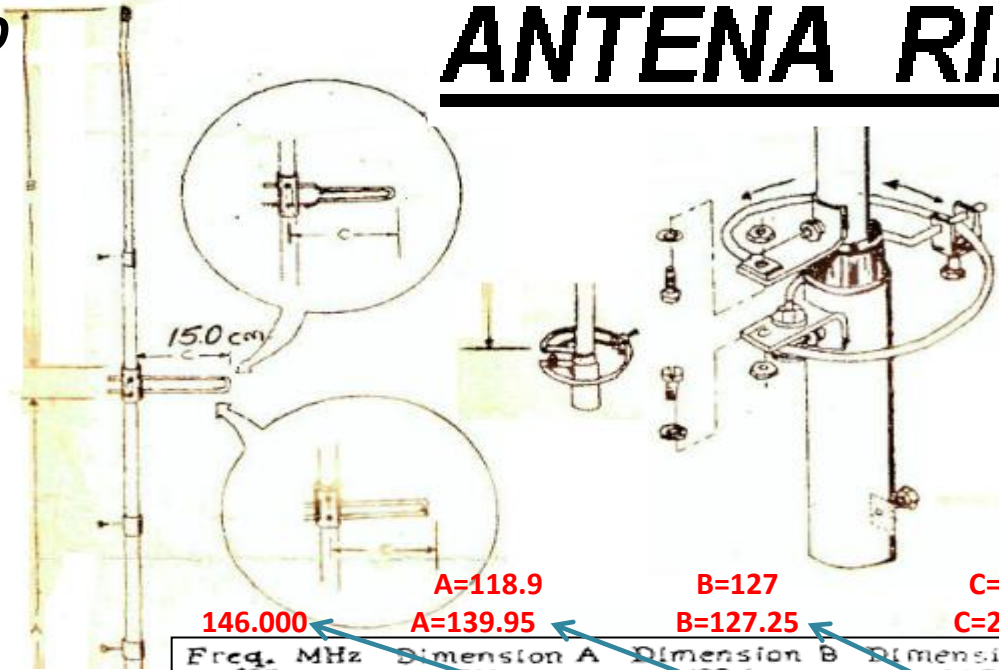
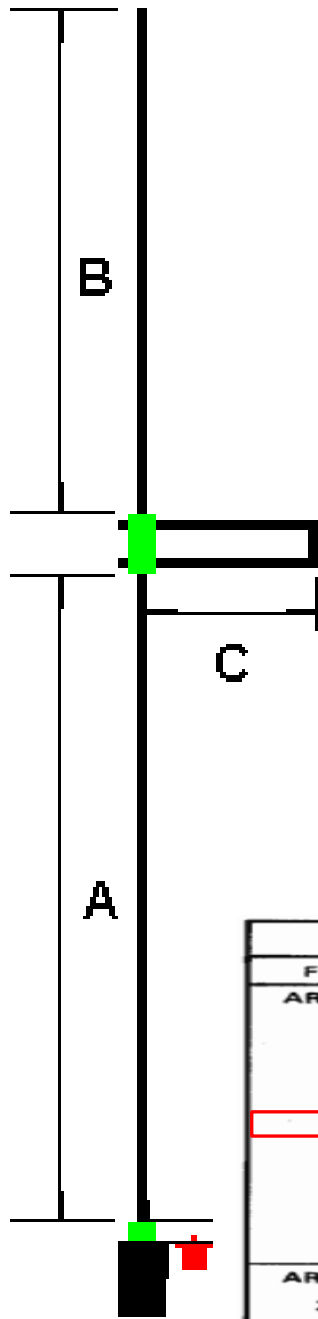


ANTENA RINGO - VHF

LAS MEDIDAS SON APROXIMADAS Y ESTÁN EXPRESADAS EN MILÍMETROS



Freq. MHz	Dimension A	Dimension B	Dimension C
135	1511	1384	247
136	1501	1374	243
137	1492	1365	241
138	1482	1354	239
139	1470	1344	237
140	1460	1333	235
141	1450	1324	233
142	1441	1314	231
143	1431	1304	229
144	1421	1294	228
145	1410	1283	227
146	1400	1273	226
147	1390	1263	225
148	1380	1255	224
149	1369	1246	223
150	1359	1238	222
151	1349	1228	220
152	1339	1219	219
153	1330	1210	218
154	1322	1202	217
155	1314	1193	216
156	1305	1184	214
157	1295	1175	212
158	1287	1168	211
159	1278	1162	210
160	1270	1155	209

CHART A

Freq. MHz	Dimension A	Dimension B	Dimension C
ARX-2B			
135	59 1/2" (1.51 m)	54 1/2" (1.38 m)	9 3/4" (24.8 cm)
137	58 3/4" (1.49 m)	53 3/4" (1.36 m)	9 1/2" (24.1 cm)
140	57 1/2" (1.46 m)	52 1/2" (1.33 m)	9 1/4" (23.5 cm)
142	56 3/4" (1.44 m)	51 3/4" (1.31 m)	9 1/8" (23.2 cm)
145	55 1/2" (1.41 m)	50 1/2" (1.28 m)	9" (22.9 cm)
146	55 1/8" (1.40 m)	50 1/8" (1.27 m)	8 15/16" (22.7 cm)
147	54 3/4" (1.39 m)	49 3/4" (1.26 m)	8 7/8" (22.5 cm)
150	53 1/2" (1.36 m)	48 3/4" (1.24 m)	8 3/4" (22.2 cm)
152	52 3/4" (1.34 m)	48" (1.22 m)	8 5/8" (21.9 cm)
155	51 3/4" (1.31 m)	47" (1.19 m)	8 1/2" (21.6 cm)
157	51" (1.29 m)	46 1/4" (1.17 m)	8 3/8" (21.3 cm)
160	50" (1.27 m)	45 1/2" (1.16 m)	8 1/4" (21.0 cm)
ARX-220B			
220-225	33 1/8" (84.1 cm)	32" (81.3 cm)	5 3/4" (14.6 cm)

fMhz	A	B	C
135	1511	1384	247
136	1501	1374	243
137	1492	1365	241
138	1482	1354	239
139	1470	1344	237
140	1460	1333	235
141	1450	1324	233
142	1441	1314	231
143	1431	1304	229
144	1421	1294	228
145	1410	1283	227
146	1400	1273	226
147	1390	1263	225
148	1380	1255	224
149	1369	1246	223
150	1359	1238	222
151	1349	1228	220
152	1339	1219	219
153	1330	1210	218
154	1322	1202	217
155	1314	1193	216
156	1305	1184	214
157	1295	1175	212
158	1287	1168	211
159	1278	1162	210
160	1270	1155	209

A=118.9 B=127 C=22.2
 A=139.95 B=127.25 C=22.65

Freq. MHz	Dimension A	Dimension B	Dimension C
135	1511	1384	247
136	1501	1374	243
137	1492	1365	241
140	1460	1333	235
142	1441	1314	231
145	1409	1282	228
147	1390	1263	225
150	1358	1238	222
152	1339	1219	219
155	1314	1193	215
157	1295	1174	212
160	1270	1155	209