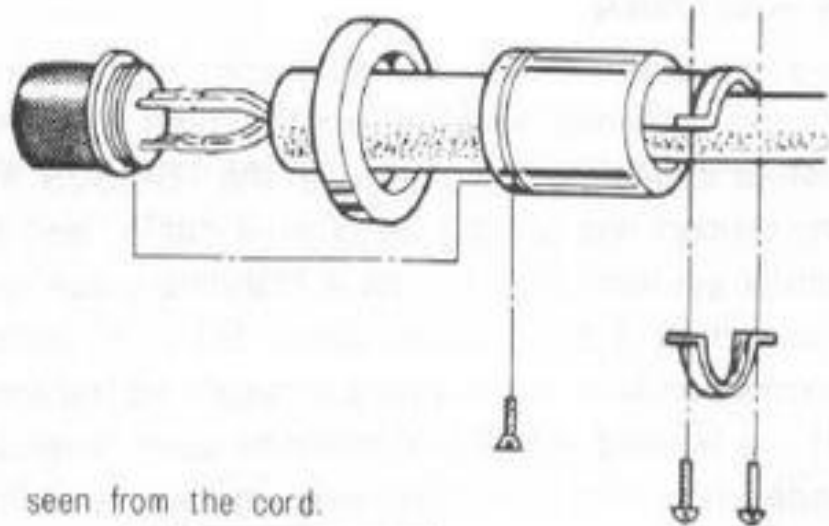
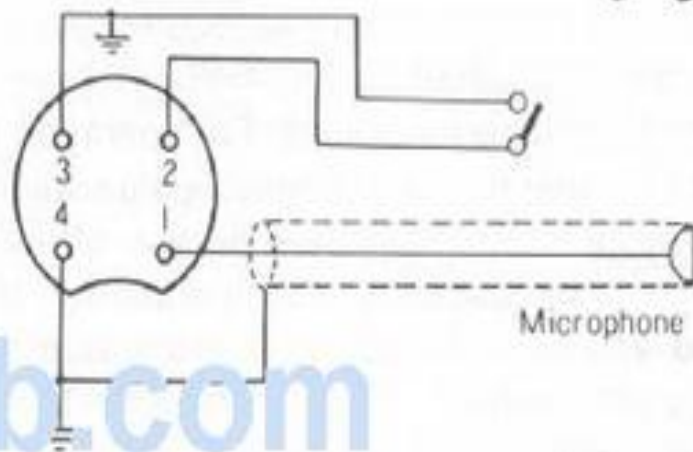


Model TS-180S



seen from the cord.

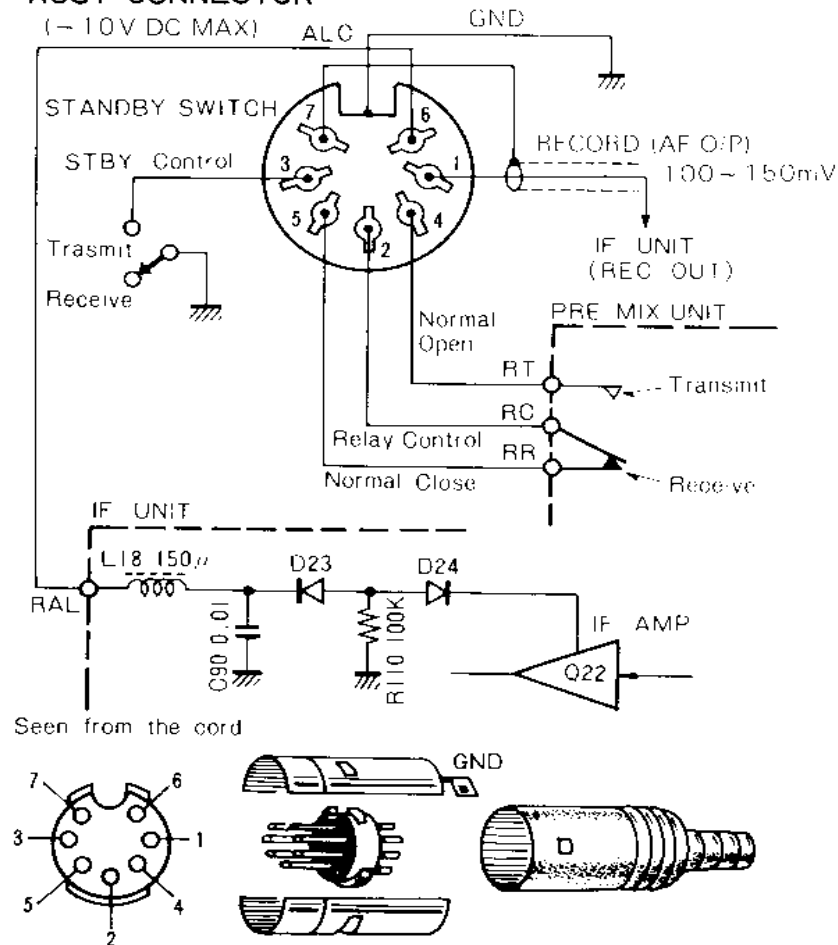


Microphone Connection

Function	Pins
ALC	6, GND * (-10VDC max.)
Relay Control * 100V 0.3A	2 and 5 or 4 * Bridge 2 to GND if Required.
EXT. P.T.T.	3, GND
RECORD O/P	1.7

ACSY CONNECTOR

(-10V DC MAX)



Seen from the cord

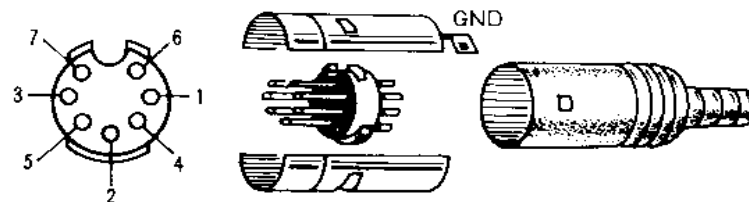
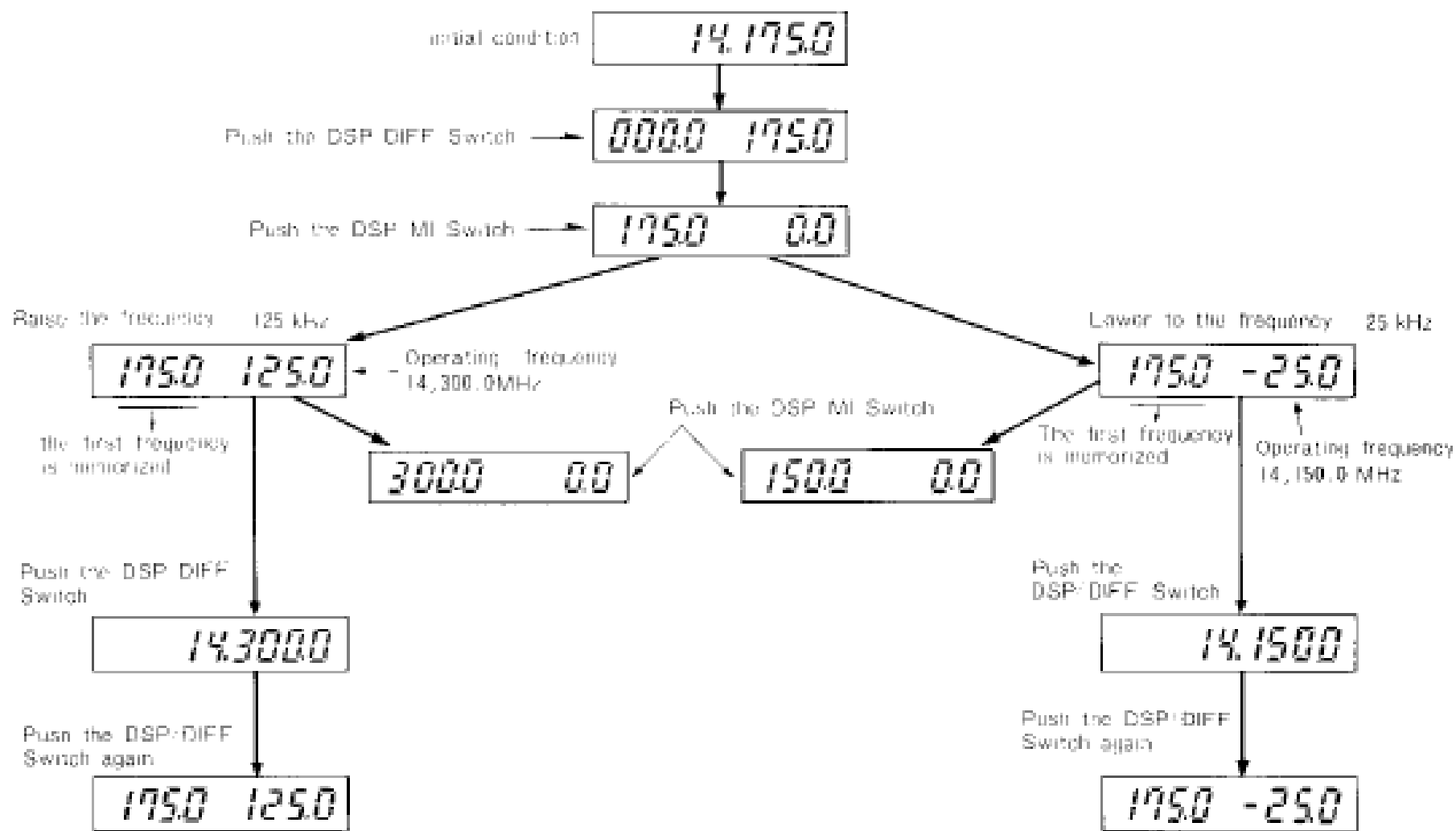


Fig. 5-3 Accessory Connector
TS-180S Internal Wiring

Model TS-180S



For example, assume a starting frequency of 14.175.0 MHz.



Model TS-180S

Mikrofono Kenwood

TR-7200A TR-7400A TR-7500

TS-120S TS-130S TS-180S TS-511S TS-520 TS-530 TS-600 TS-700 TS-820 TS-830

4 Pin Microphone Plug

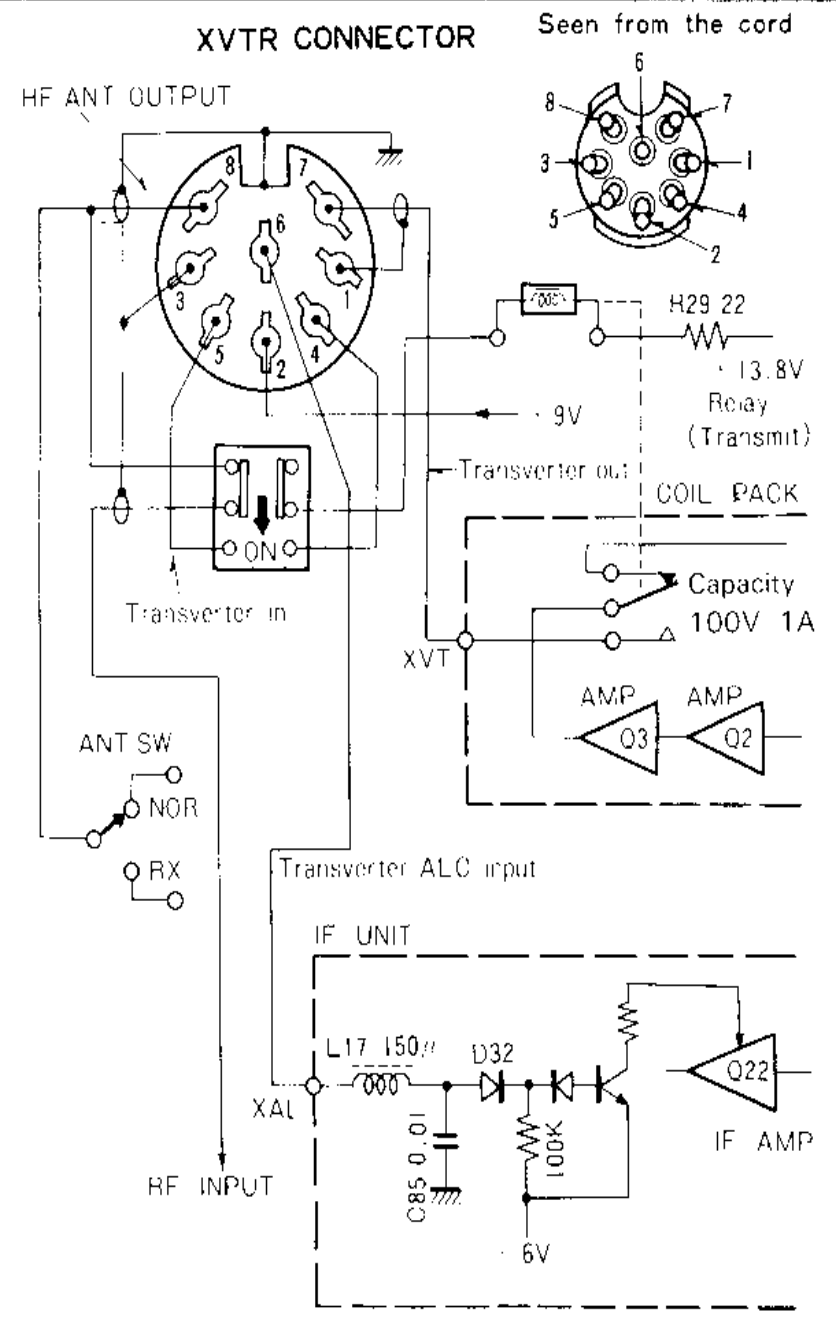
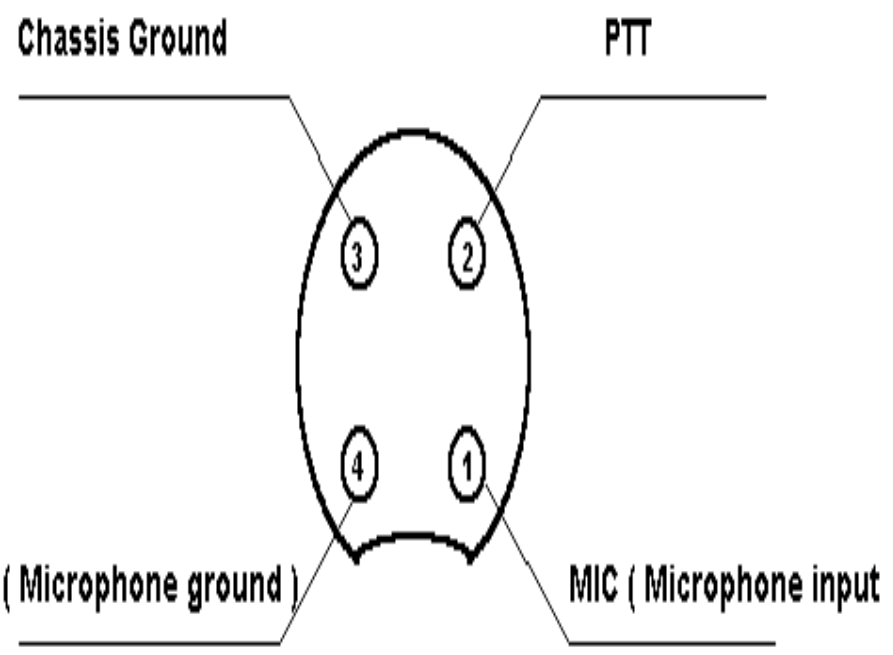
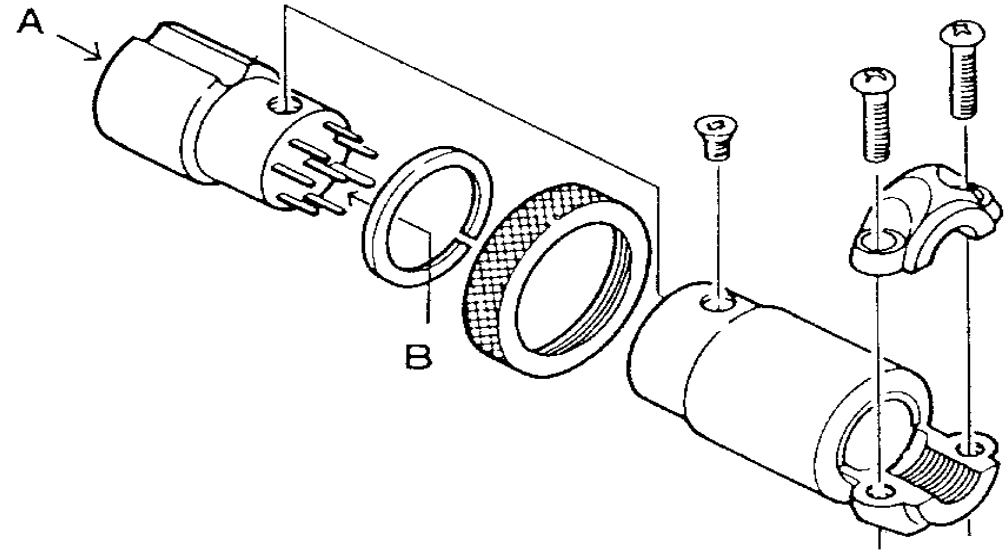
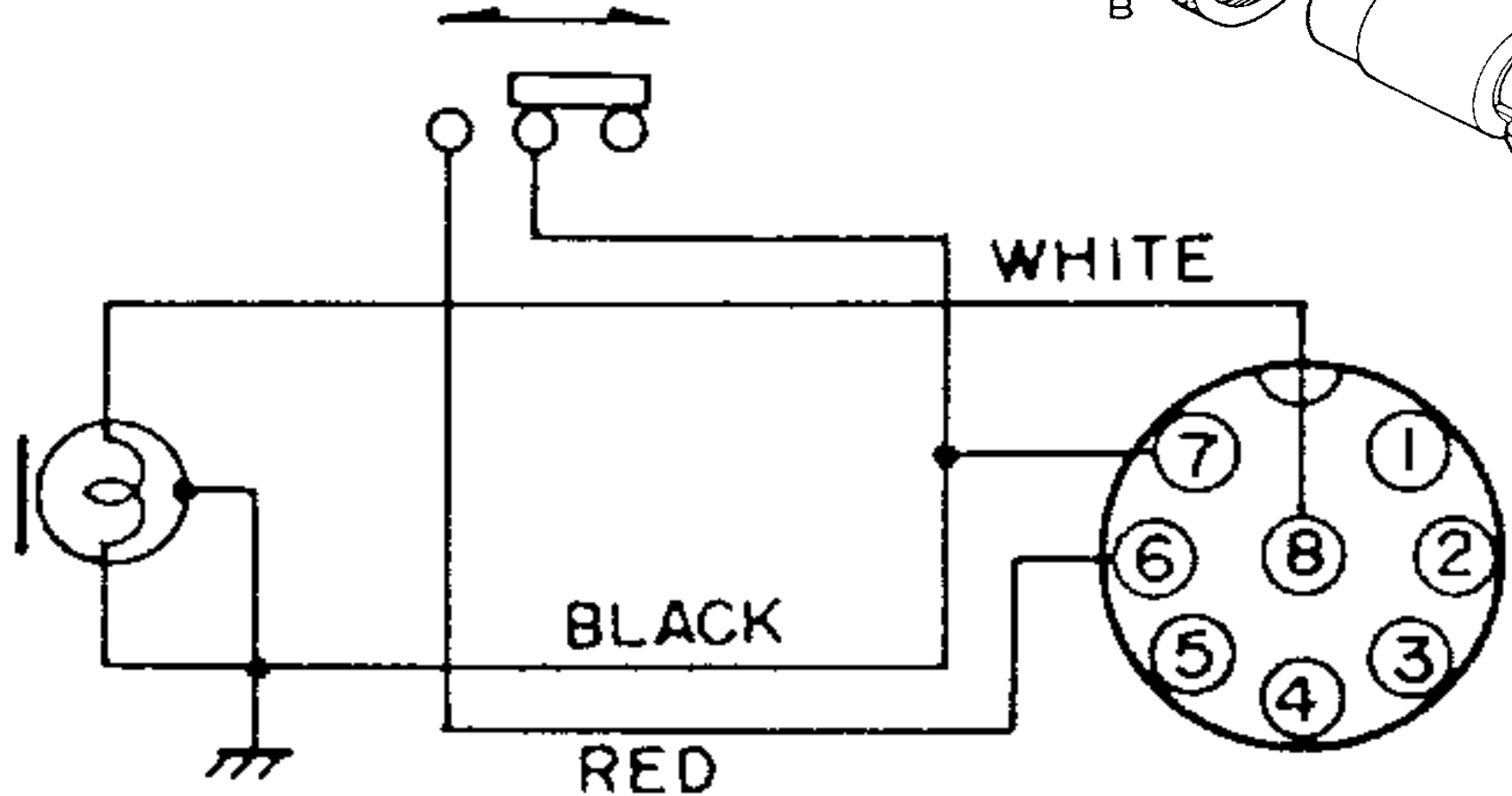


Fig. 5-4 X VTR Connector

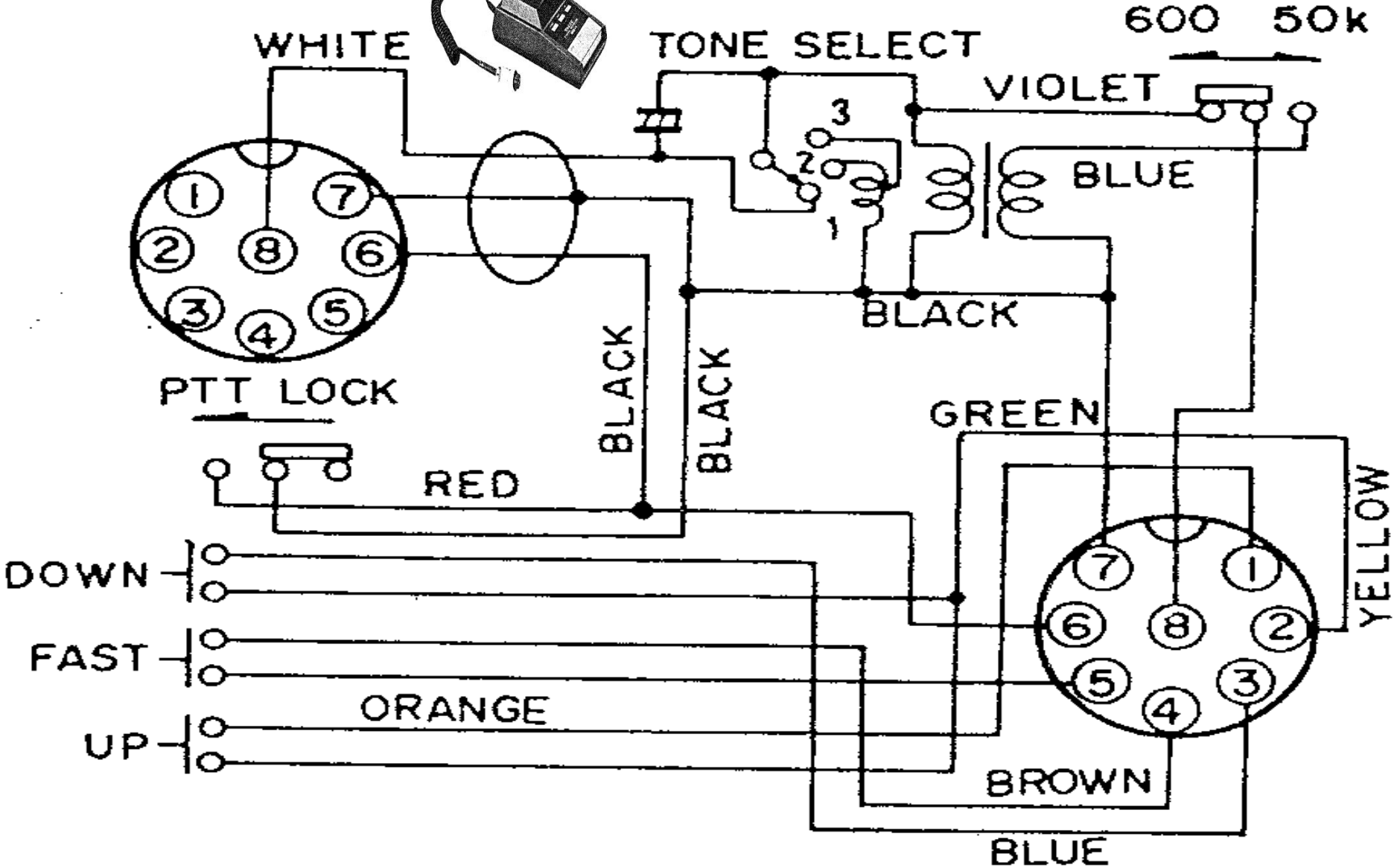
YAESU FT-757GX

TX STBY



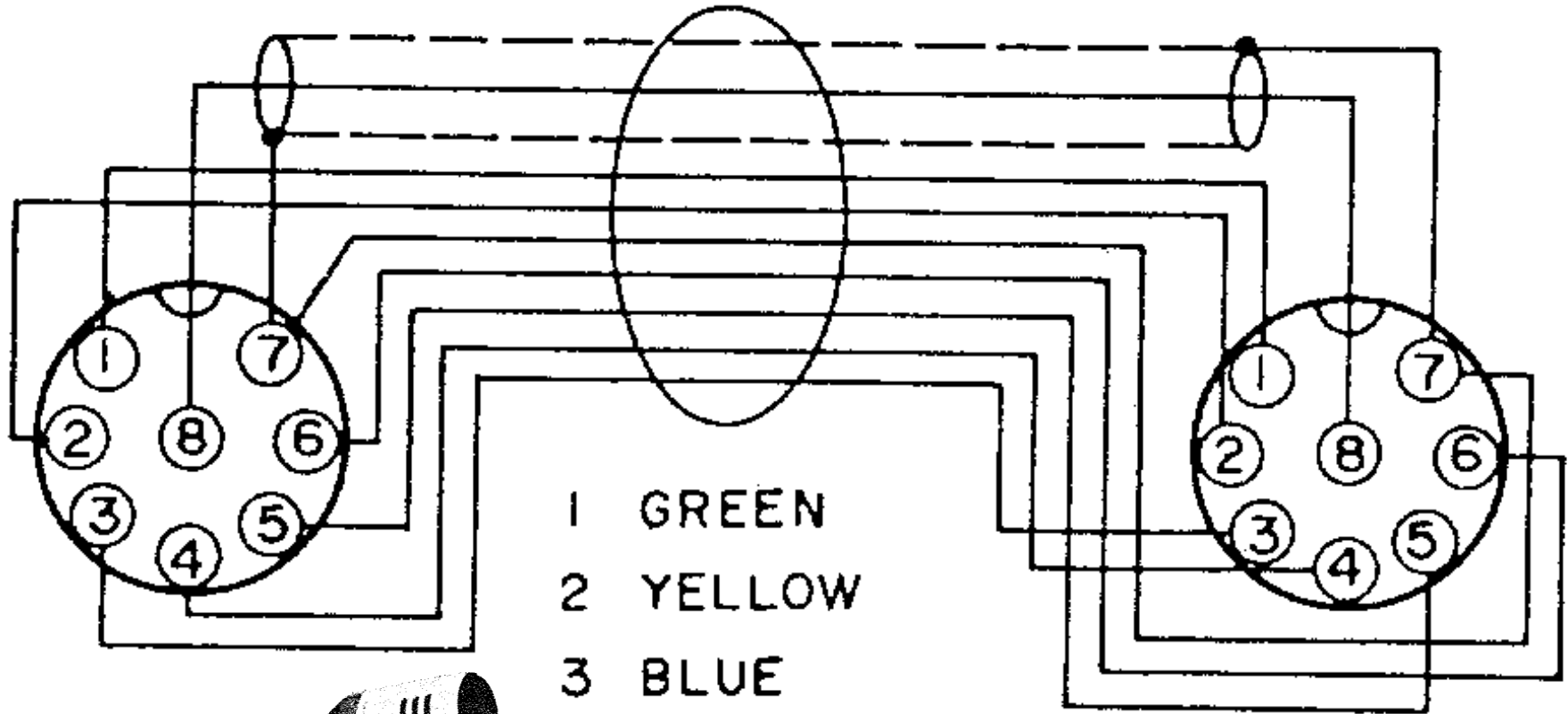
Viewed from "A" side

YAESU FT-757GX



YAESU

FT-757GX

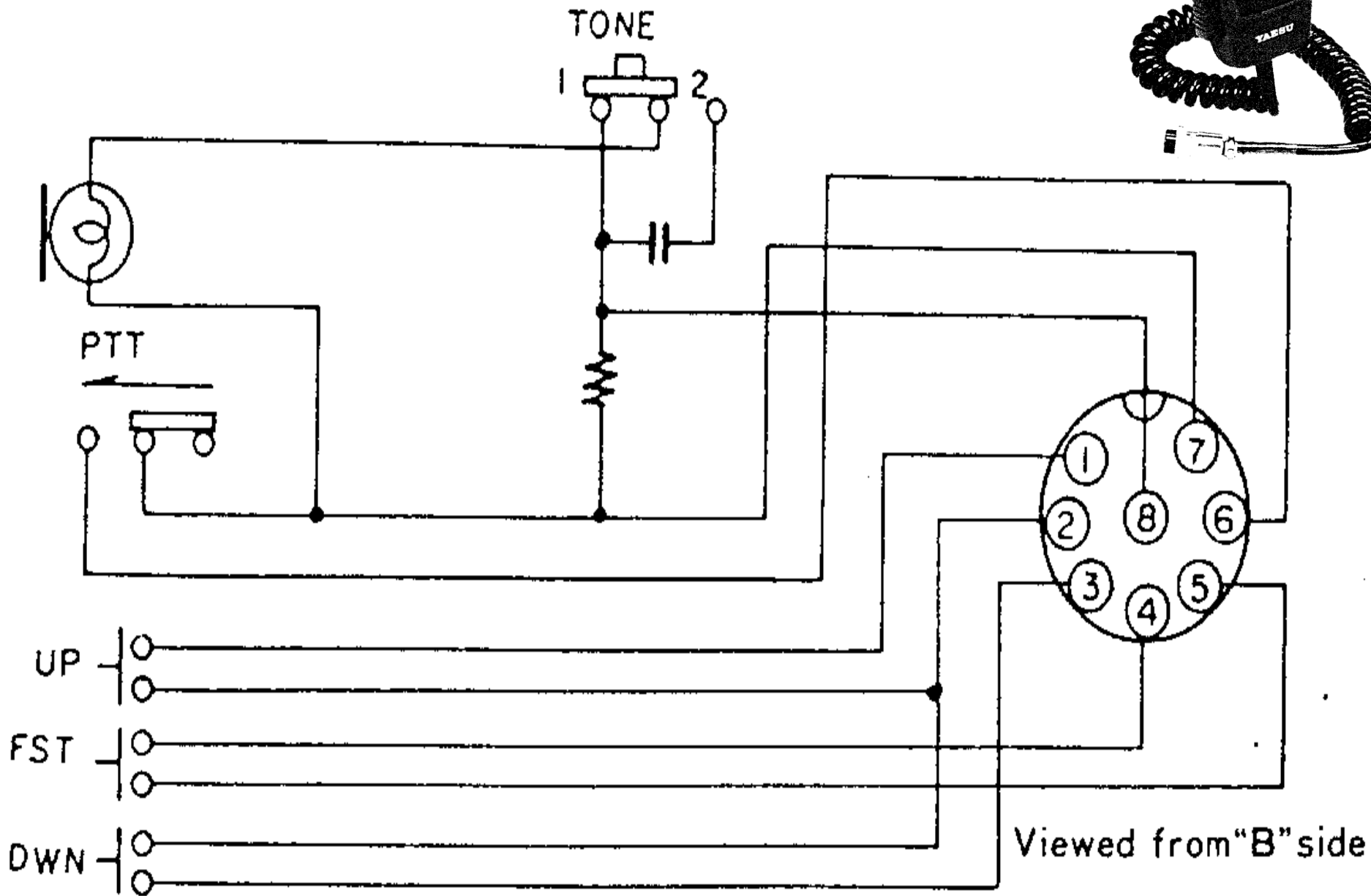


- 1 GREEN
- 2 YELLOW
- 3 BLUE
- 4 BROWN
- 5 ORANGE
- 6 RED
- 7 BLACK) SHIELDED
- 8 WHITE)

Viewed from "B" side

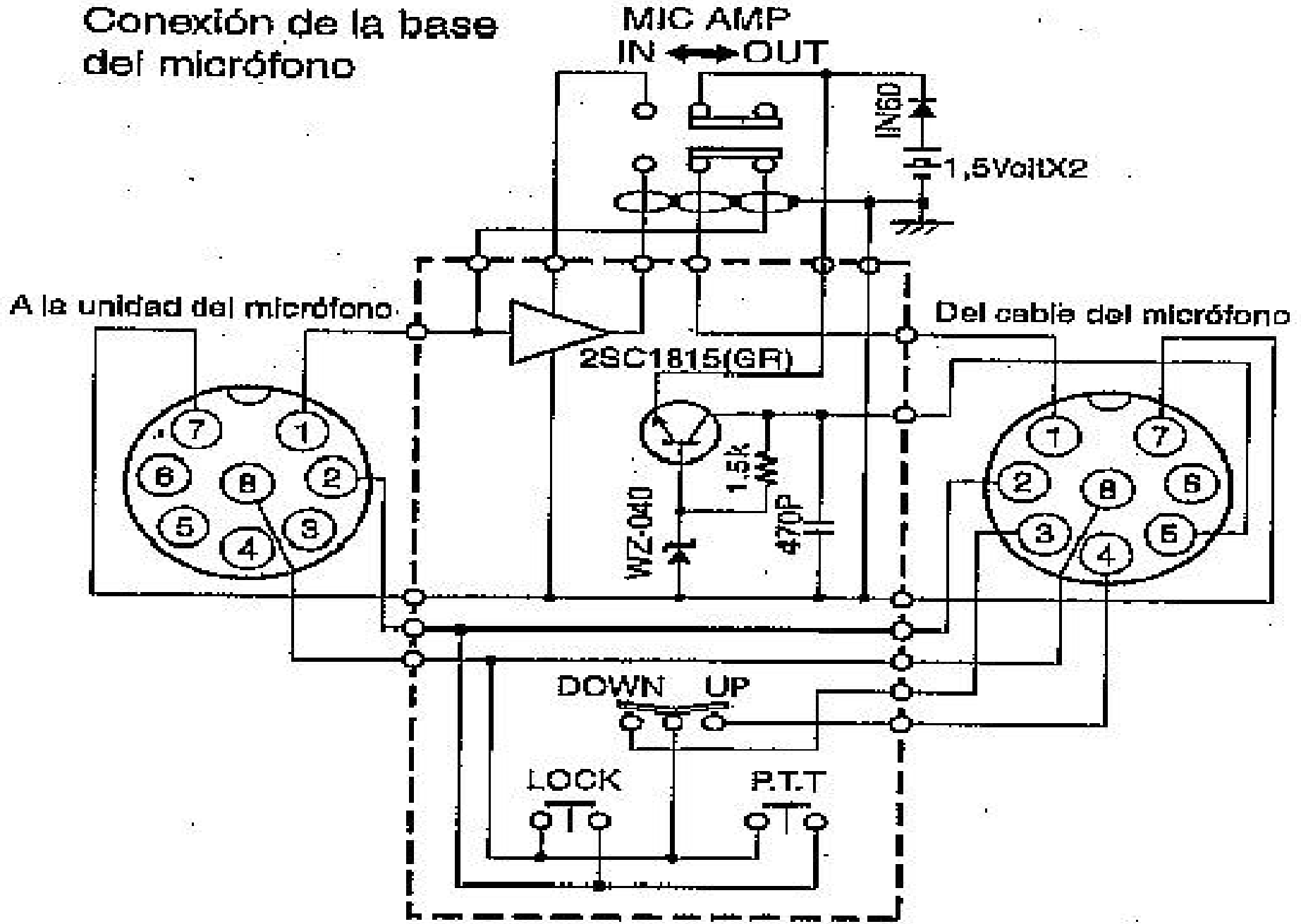


YAESU

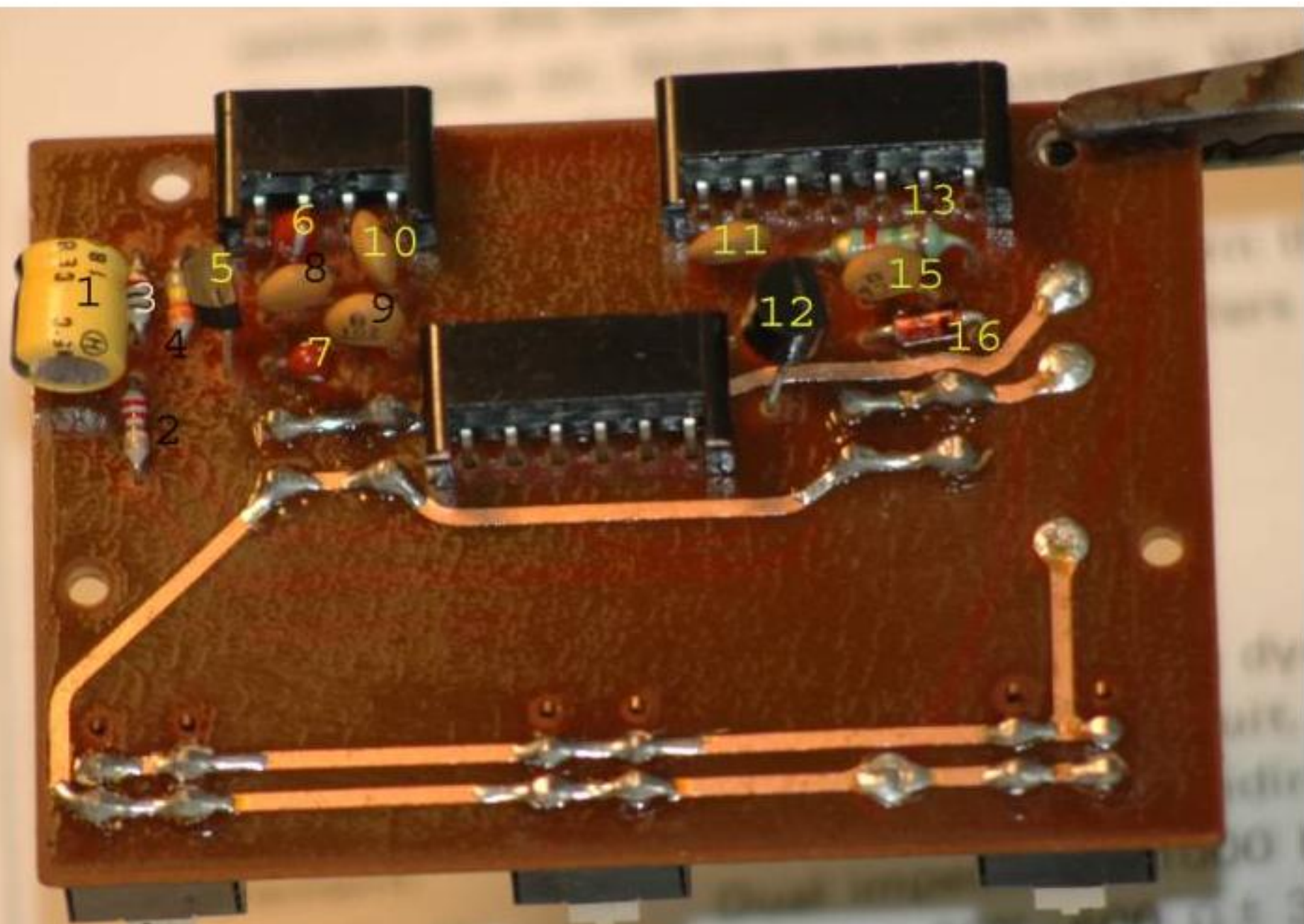


Micrófono Kenwood Mc-60

Conexión de la base del micrófono



Micrófono Kenwood Mc-60



Micrófono Kenwood Mc-60

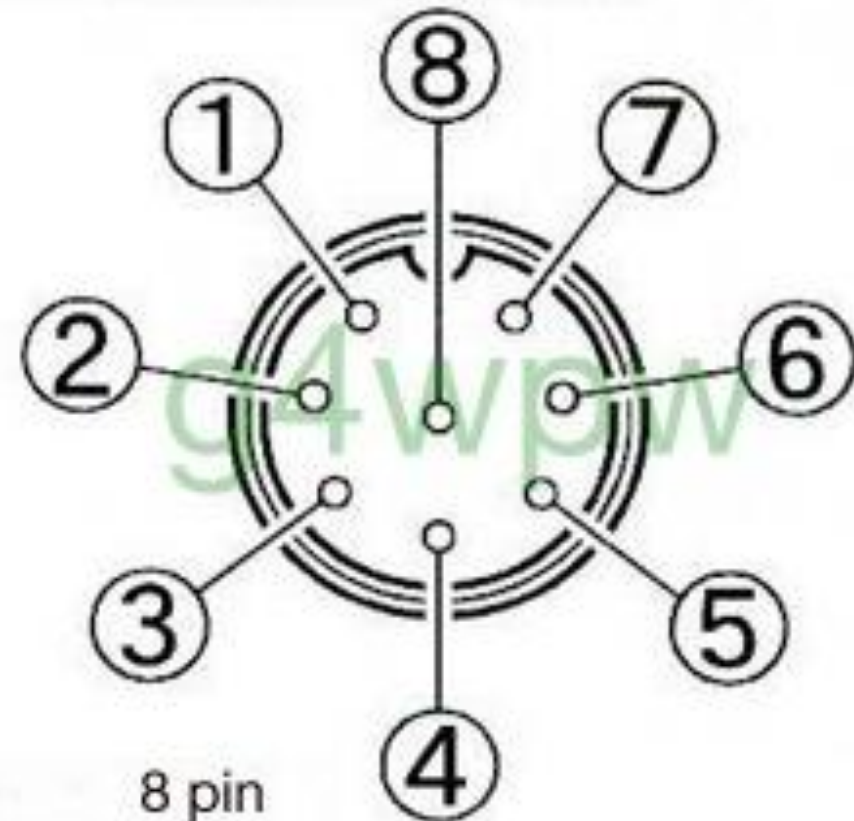


PLEASE NOTE !

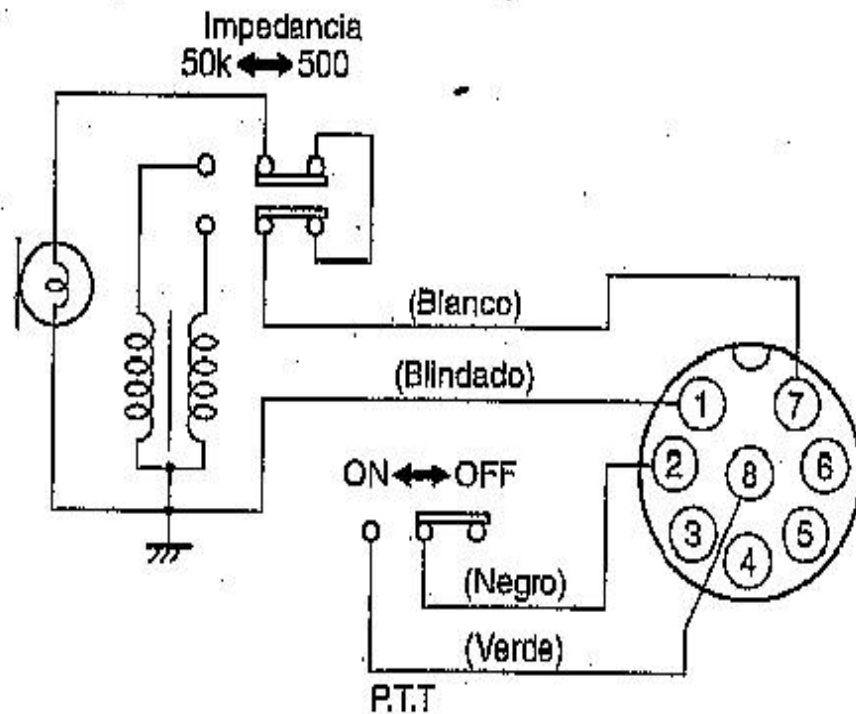
RF Feedback has been experienced due to a connection error in the above schematic. The correct connections are below.

- PIN 1 MIC. (white)
- PIN 3 DOWN. (blue)
- PIN 2 PTT. (black)
- PIN 4 UP. (red)
- PIN 5 N/C.
- PIN 6 N/C.
- PIN 7 MIC GROUND (shield/braid)
- PIN 8 PTT GROUND (green)

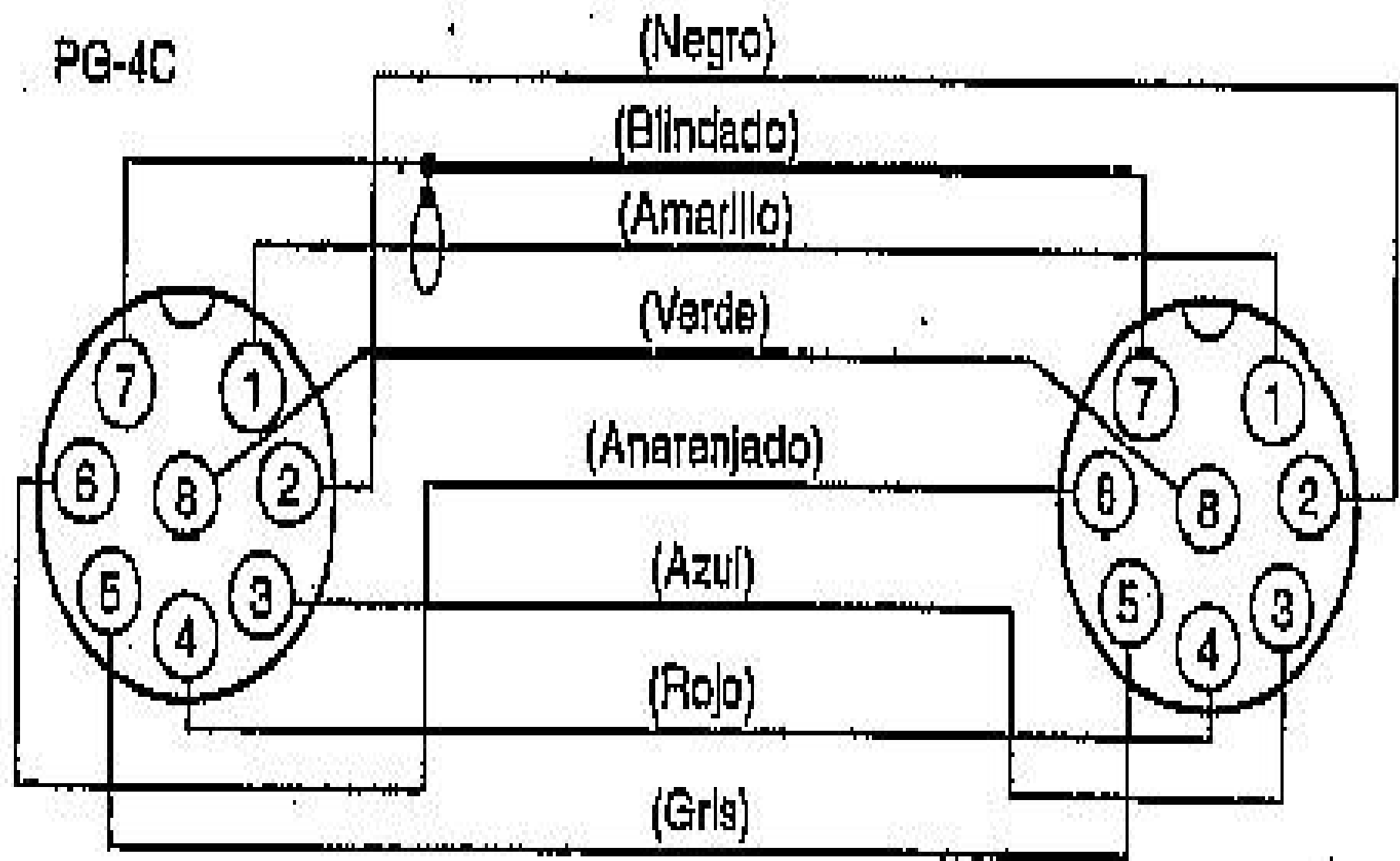
view from front of transceivers



Conexión de la unidad del micrófono



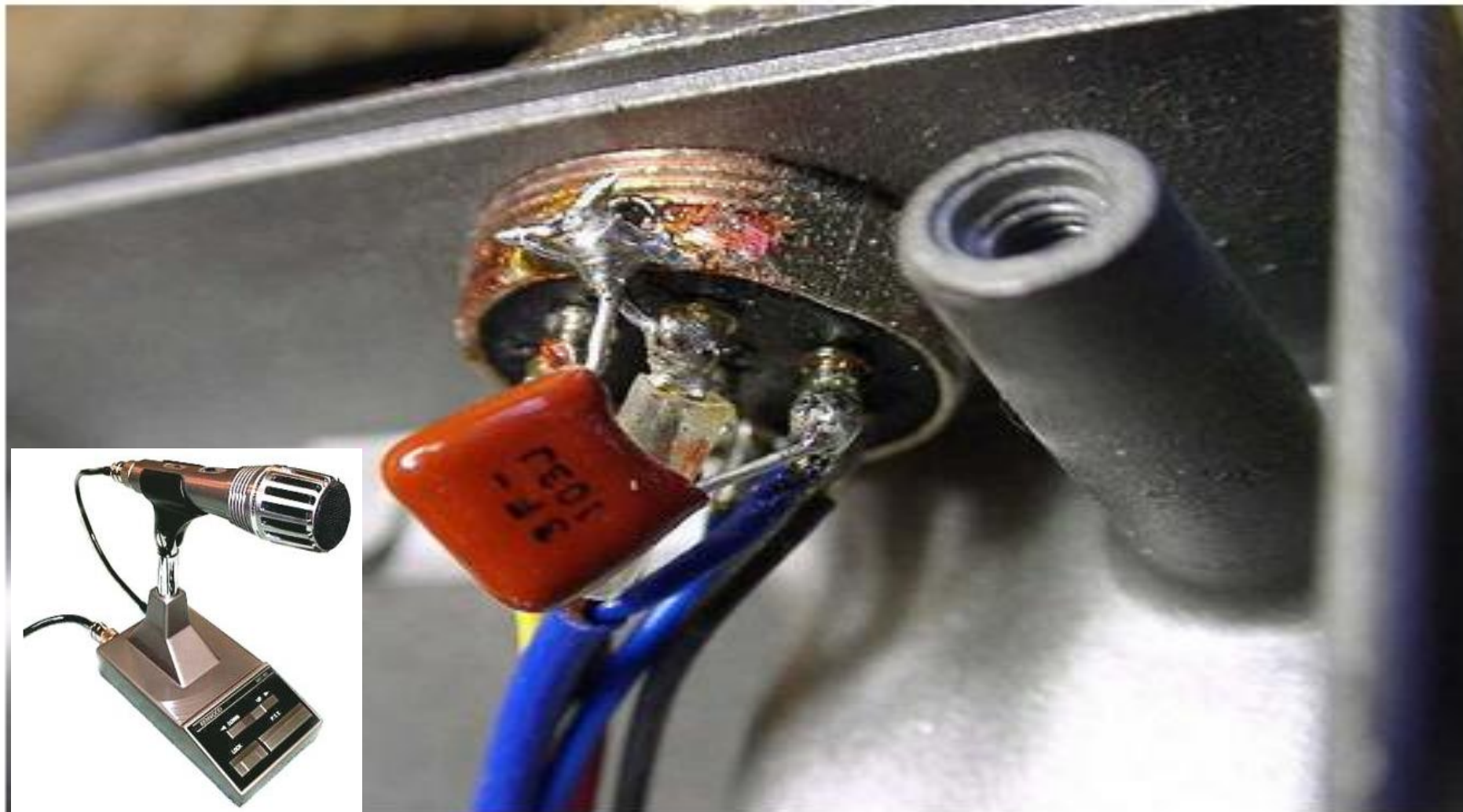
Conexión del cable del micrófono



Micrófono Kenwood Mc-60

Kenwood MC-60 solucionar problemas de RFI

Abrir la placa inferior y sólo soldar un condensador de 10nF entre el cable azul y el conector, ver foto.



[Microfono kenwood MC-60A Schema](#)

[MC-60 kenwood instruccion manual](#)